

# Pattern Emma

## YARN USAGE

Emma H 21 cm

Grey Vintage: 75 g

Off-white Vintage: 10 g

## MATERIALS

Embroidery yarn, Felt, Tulle,

Elastic, Press stud,

Toy stuffing, Metal wire

Eyes: 8 mm

Double pointed needles: 3,0 mm



*Knitted in Go handmade's Vintage  
- a luxurious mix of wool and bamboo:  
70% Wool/30% Bamboo, 25 g/60 m.*



Go handmade  
quality design in a unique style

www.go handmade.net  
© 2019



## YARN USAGE:

75 g Grey Vintage  
10 g Off-white Vintage

## MATERIALS:

Embroidery yarn  
Felt  
Tulle  
Elastic  
Press stud  
Toy stuffing  
Plastic granules\*  
Eyes 8 mm  
Metal wire  
Double pointed needles 3,0 mm

*The given amounts of yarn are for guidance only.*

*\*This type of filling is heavy and good for stabilizing weight.*

*It is recommended that the filling continues on an ongoing basis as the work progresses.*

### Mounting of the safety eyes:

The eyes are inserted, and the rear stops to the eyes are pushed from the inside.  
The rear stops can and should be a little hard to plug in to ensure that they are sticking well.

## ABBREVIATIONS AND DEFINITIONS

|                |  |
|----------------|--|
| st(s)          | stitch(es)   |
| k              | knit   |
| p              | purl   |
| M1B            | increase (lift the loop between the stitches from behind with the left needle. Work it as a knit stitch)   |
| k 2 in same st | increase. Knit from the front and back in same stitch before it is taken off the needle  |
| k2 tog         | decrease. Knit 2 sts together  |
| SSK            | Slip, Slip, Knit. (decrease) Slip 2 stitches knit-wise one at a time. Insert left needle through front loop of both sts and k2 tog. Can be replaced by knitting 2 sts twisted together |
| Moss stitch    | it is knitted *1k,1p*. On the next round, knit the same but shifted, so that the knit stitch is above a purl stitch and the purl stitch above a knit stitch                            |
| * ... *        | to end repeat what is shown in these brackets to the end of the row  |
| (..)           | at the end of the line, specifies the number of sts on the needle  |

UK





## EMMA

### BODY (GREY)

Cast on 8 sts with Grey yarn, distributed on 3 double-pointed needles and work in the round (stocking stitch).

- |            |                                 |      |
|------------|---------------------------------|------|
| 1.)        | *k 2 in same st* to end         | (16) |
| 2.)        | *k 2 in same st, 1k* to end     | (24) |
| 3.)        | *k 2 in same st, 2k* to end     | (32) |
| 4.)        | *k 2 in same st, 3k* to end     | (40) |
| 5. - 20.)  | k                               | (40) |
| 21.)       | 15k, k2 tog x 5, 15k            | (35) |
| 22.)       | 15k, 1 SSK, 1k, k2 tog, 15k     | (33) |
| 23. - 26.) | k                               | (33) |
| 27.)       | *3k, k2 tog* to end x 6, 3k     | (27) |
| 28. - 29.) | k                               | (27) |
| 30.)       | *k2 tog, 2k* to end x 6, 1k     | (20) |
| 31. - 32.) | k                               | (20) |
| 33.)       | *k2 tog, 1k* to end x 6, k2 tog | (13) |
| 34.)       | k                               | (13) |

Thread the yarn through the stitches.

Make a little bag (possibly of a nylon stocking) with plastic granules, place it in the bottom of the body. Stuff the rest of the body with toy stuffing and sew the opening at the top together.

UK

### HEAD (GREY/OFF-WHITE)

Cast on 8 sts with Grey yarn and work back and forth (stocking stitch).

- |           |                             |      |
|-----------|-----------------------------|------|
| 1.)       | *k 2 in same st* to end     | (16) |
| 2.)       | p                           | (16) |
| 3.)       | *k 2 in same st, 1k* to end | (24) |
| 4.)       | p                           | (24) |
| 5.)       | *k 2 in same st, 2k* to end | (32) |
| 6. - 16.) | Stocking stitch             | (32) |
| 17.)      | 2k, *k2 tog, 3k* to end     | (26) |

- |            |                         |      |
|------------|-------------------------|------|
| 18. - 20.) | Stocking stitch         | (26) |
| 21.)       | *2k, k2 tog* to end     | (20) |
| 22. - 24.) | Stocking stitch         | (20) |
| 25.)       | 2k, *k2 tog, 1k* to end | (14) |
| 26. - 27.) | Stocking stitch         | (14) |

Change to Off-white yarn.

- |      |                            |      |
|------|----------------------------|------|
| 28.) | p                          | (14) |
| 29.) | 2k, k2 tog x 5, 2k         | (9)  |
| 30.) | p                          | (9)  |
| 31.) | 2k, k2 tog, 1k, k2 tog, 2k | (7)  |

Cut the yarn, thread the yarn through the stitches, tighten the yarn and sew the head together, leave a little opening. Stuff the head with toy stuffing.

Shape the head and eye sockets by drawing a thread from the head's opening (where it will be sewn on the body) to the placement of one of the eyes, lead the thread around a stitch, and back again.

Tighten the thread to form an eye socket and fasten the threads by tying a knot. Repeat for the other eye.

Attach the safety eyes.

Close the last opening.

Embroider a "Y" with black embroidery yarn as a snout, and embroider a small nose in coloured embroidery yarn between the "arms" of the Y. Sew the head onto the body.

### EAR (GREY/OFF-WHITE, 2 X)

Cast on 7 sts with Grey yarn and work back and forth (stocking stitch).

- |          |                          |      |
|----------|--------------------------|------|
| 1.)      | p                        | (7)  |
| 2.)      | *1k, M1B* to end x 6, 1k | (13) |
| 3.)      | p                        | (13) |
| 4.)      | 3k, M1B, 7k, M1B, 3k     | (15) |
| 5. - 8.) | Stocking stitch          | (15) |
| 9.)      | k                        | (15) |



Change to Off-white yarn.

10. - 13.) Stocking stitch (15)  
14.) 2k, k2 tog, 7k, k2 tog, 2k (13)  
15.) p (13)  
16.) \*k2 tog\* to end x 6, 1k (7)

Cut the yarn and pull it through the stitches with a darning needle and tighten.

Fold the ear by the folding edge and sew a couple of stitches to keep the fold in place.

Sew the ears onto the head 3 cm above the eyes and with 5cm space in between.

### ARM (GREY/OFF-WHITE, 2 X)

Cast on 12 sts with Grey yarn, distributed on 3 double-pointed needles and work in the round (stocking stitch).

1. - 8.) k (12)  
9.) k2 tog, 10k (11)  
10.) 3k, k2 tog, 6k (10)  
11.) 6k, k2 tog, 2k (9)  
12. - 13.) k (9)  
14.) k2 tog, 7k (8)  
15.) 2k, k2 tog, 4k (7)  
16.) 4k, k2 tog, 1k (6)  
17. - 18.) k (6)

Change to Off-white yarn.

19. - 26.) k (6)

Thread the yarn through the stitches.

Cut about 20 cm of the wire. Wrap Off-white yarn around 2 cm of wire and bend 1 cm down.

Put the wire with the yarn ends down in one arm, and fill the rest with filling.

Put the other end of the wire through the body by the shoulders, and sew the arm on.

Wrap Off-white yarn around the other end of the wire and bend, as with the first.

Put the wire with the yarn ends down the other arm, and fill with filling. Sew the arm onto the body. Bend the arms at the colour change so the mouse gets hands.

### LEG (GREY/OFF-WHITE, 2 X)

Cast on 15 sts with Grey yarn, distributed on 3 double-pointed needles and work in the round (stocking stitch).

1. - 10.) k (15)  
11.) k2 tog, 13k (14)  
12.) 4k, k2 tog, 8k (13)  
13.) 8k, k2 tog, 3k (12)  
14. - 16.) k (12)  
17.) k2 tog, 10k (11)  
18.) 3k, k2 tog, 6k (10)  
19.) 6k, k2 tog, 2k (9)  
20. - 21.) k (9)  
22.) k2 tog, 7k (8)  
23.) 2k, k2 tog, 4k (7)  
24.) 4k, k2 tog, 1k (6)  
25.) k (6)

Change to Off-white yarn.

26. - 37.) k (6)

Thread the yarn through the stitches.

Cut about 2 x 15 cm of the wire.

The wire and the legs are fitted just like the arms, except here the wire is put up into the body from below, and the legs are fastened.

Bend the legs at the colour change so the mouse gets feet.

UK





## TAIL (GREY)

Cut about 25 cm of the wire. Wrap yarn around the whole wire, except about 2 cm in one end.

Make a small inflection which serves as a "counter hook" in the mouse body.

Poke a hole in the body with a knitting needle, fill the hole with glue, and stuff the tale with the inflection into the body.

You may sew a few stitches to close the hole and further fasten the tail.

## SHIRT IN MOSS STITCH (GREY)

### Front:

Cast on 24 sts and work back and forth (moss stitch).

- |            |   |         |
|------------|---|---------|
| 1. - 26.)  | Moss stitch (1k, 1p)  | (24)    |
| 27.)       | Close 2 sts off, moss stitch the rest of the round                      | (22)    |
| 28.)       | Close 2 sts off, moss stitch the rest of the round                      | (20)    |
| 29. - 38.) | Moss stitch   | (20)    |
| 39.)       | 8 sts moss stitch, close 4 sts off for the neck line, 8 sts moss stitch | (8 x 2) |

Now, knit each side separate.

- |      |  |     |
|------|--|-----|
| 40.) | 8 sts moss stitch                                  | (8) |
| 41.) | Close 2 sts off, moss stitch the rest of the round | (6) |
| 42.) | Moss stitch  | (6) |

Put the stitches on a stitch holder and knit the other side.

Start on the purl side, inwards to the neck.

- |            |  |     |
|------------|--|-----|
| 40.)       | Close 2 sts off, moss stitch the rest of the round | (6) |
| 41. - 42.) | Moss stitch  | (6) |

Put the stitches on a stitch holder and put the piece aside.

### Back:

This is made the same way as the front piece.

Put the front and back pieces together, knit on knit, and knit the shoulder stitches together and close them off. Repeat on the other side.

Sew the side seams together and turn the shirt outside in.

### Sleeve:

Gather 17 sts along the sleeve edge from the knit side, and spread them on to 3 needles and knit around.

- |           |                                    |      |
|-----------|------------------------------------|------|
| 1. - 7.)  | Moss stitch                        | (17) |
| 8.)       | k2 tog, 13 sts moss stitch, k2 tog | (15) |
| 9. - 15.) | Moss stitch                        | (15) |

Cast off.

Repeat on the arm hole.

Place a felt heart in the middle of the shirt and sew it on with ri-stitches.

## TOP

Lay the pattern sheets on the felt and cut in accordance with the given pattern sheet.

The felt piece is folded and the small shoulder pieces are sewn together.

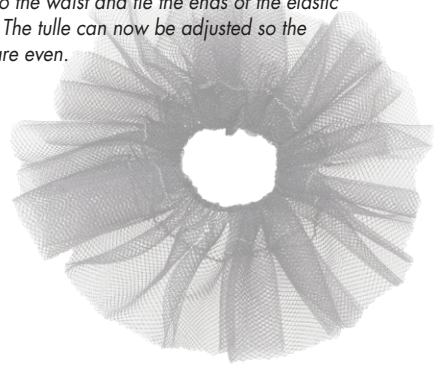
A button is sewn at the top, by the neck.

## TULLE SKIRT

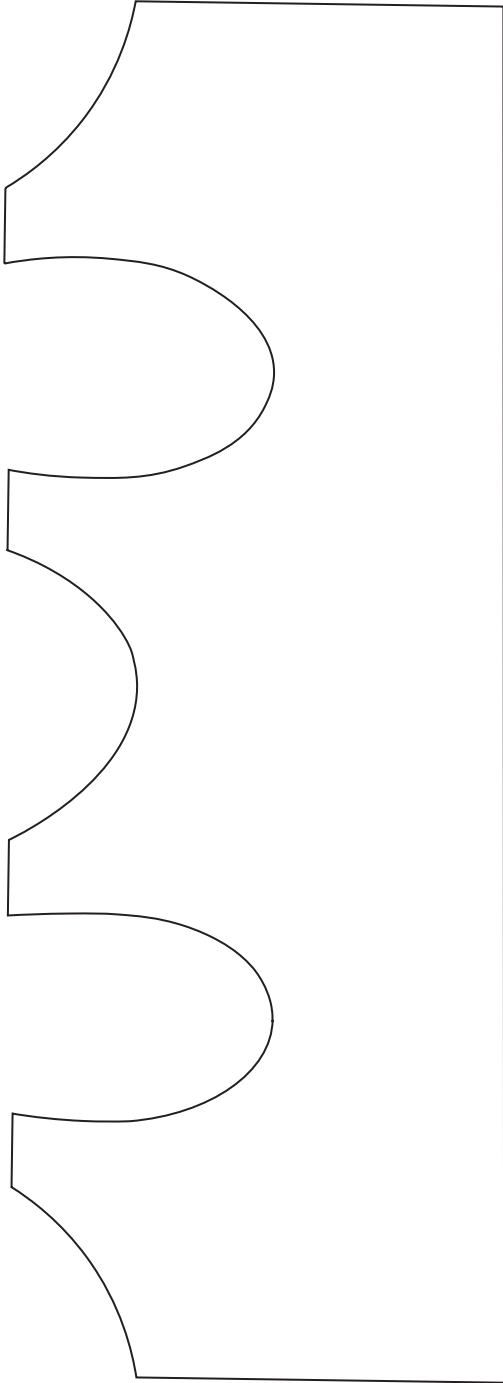
Place two strips of tulle, each 75 cm long x H 10 cm, on top of each other. Fold them once lengthwise.

Sew a seam 1 cm from the folded edge along the entire length. A casing is now created.

Thread the elastic through the casing perhaps by using a darning needle. Adjust the size/elastic of the skirt to the waist and tie the ends of the elastic together. The tulle can now be adjusted so the gathers are even.



EMMA - TOP



# Good to know

## Needle Size + Tension

Knitters knit very differently: some knit with a needle size 2,0 mm and obtain the same size of design quality as a person who knits with a needle size 4,0 mm. We owe this knowledge to the team of knitters who join us.

The key to knit a specific size is a lot about the knitting style/hands/skills, rather than the size of needles.

Therefore, we will recommend a range of needle sizes.



# Go handmade

quality design in a unique style