

Pattern

Sweater Nino

- Little ones
& Tweens



Many colors

Knitted with two threads:
Knitted with Go handmade's Soft Bamboo "fine"
- 70% Bamboo, 23% Cotton, 7% Acrylic
50 g/180 m.



YARN USAGE

Knitted with two threads

Sizes

3-4 years:	300 g
5-6 years:	350 g
7-8 years:	400 g
9-10 years:	450 g
11-12 years:	500 g

Skill Level:

★★★★ of 5.

Circular & Double Pointed Needles:

3,5 & 4,0 mm

Cable Needle

Gauge:

24 sts x 28 r/10 cm

Go handmade
quality design in a unique style

www.gohandmade.net
© 2023



YARN USAGE:

Knitted with *two threads*.

3-4 years:	300 g
5-6 years:	350 g
7-8 years:	400 g
9-10 years:	450 g
11-12 years:	500 g

Circular & Double Pointed Needles:
3,5 og 4,0 mm
Cable Needle

Gauge:
24 sts x 28 r in chart/10 cm

The given amounts of yarn are for guidance only.

FINAL MEASUREMENT

Sizes 3-4 yr (5-6 yr) 7-8 yr (9-10 yr) 11-12 yr	
Chest:	65 (68) 75 (81) 88 cm.
Length:	42 (44) 47 (49) 51 cm.
Arm Length:	29 (33) 38 (41) 43 cm.

ABBREVIATIONS AND DEFINITIONS

p	Purl
k	Knit
WS	Wrong side
RS	Right side
st(s)	Stitch(es)
r	Row
rnd(s)	Round(s)
edge st	Edge stitch – Knit first and last st in every row
M1B	Increase – From the back, lift loop between sts with left needle, knit into front st.

Soft Bamboo "fine"



- a Bamboo yarn out of the ordinary

The yarn contains all of 70% of bamboo, which gives the yarn the softest experience and a special lightness. Comfortable to the skin, it makes it also very child-friendly. The texture is silky with a beautiful drape.

Bambus and environment - Bamboo is the fastest growing plant in the world and thus a great source of sustainable production.

Bamboo releases more oxygen than any other plant and grows without the use of pesticides. 23% cotton and 7% acrylic help to stabilize the soft bamboo and give the thread a good shape retention. Machine washable.

70% Bamboo/23% Cotton/7% Acrylic,
50 g/180 m.



Go handmade
quality design in a unique style

GUIDE:

The sweater is knitted in a front and a back piece, bottom up. Knit back and forth, starting with a rib – then a simple cable pattern following a chart.

The well described chart is worked with a cable needle.

The sleeves are in the same pattern, increasing on the sides to increase the arm width.

The shoulder seams are sewn together, picking up sts at the neckline.

Finally, the arm and side seams are sewn together.

! Knitted with 2 threads

UK

LITTLE ONES & TWEENS

Sizes 3-4 yr (5-6 yr) 7-8 yr (9-10 yr) 11-12 yr

BACK PIECE

Cast on **80 (84) 92 (96) 108** sts on a 3,5 mm circular needle.

Work *k2, p2* rib between the edge sts. First r is WS. Continue in rib until the work measures **5 (6) 6 (7) 7** cm. Last r is WS.

NOTE: On sizes 9-10 and 11-12 years, on the last r from WS, increase **2** sts evenly - **98 (110)** sts. Change to a 4,0 mm circular needle and knit as follows: edge st, **78 (82) 90 (96) 108** sts according to chart, edge st. Continue until work measures **40 (42) 45 (47) 49** cm. Last r is RS.

NECK AND SHOULDER

RS: Cast off **8 (9) 9 (10) 12** sts for the right shoulder, knit to end of r.

WS: Cast off **8 (9) 9 (10) 12** sts for the left shoulder, knit to end of r.

RS: Cast off **8 (9) 9 (10) 12** sts for the right shoulder, knit **9 (8) 11 (12) 13** sts, cast off **30 (32) 34 (34) 36** sts for the neck, knit to end of r.

Finish each side separately

Left side:

WS: Cast off **8 (9) 9 (10) 12** sts for the shoulder, knit to end of r

RS: Cast off **2** sts for the neck, knit to end of r

WS: Cast off the remaining **7 (6) 9 (10) 11** sts.

Now the work measures **42 (44) 47 (49) 51** cm.

Right side:

WS: Cast off **2** m sts for the neck, knit to end of r.

RS: Cast off the remaining **7 (6) 9 (10) 11** sts.

Now the work measures **42 (44) 47 (49) 51** cm

FRONT PIECE

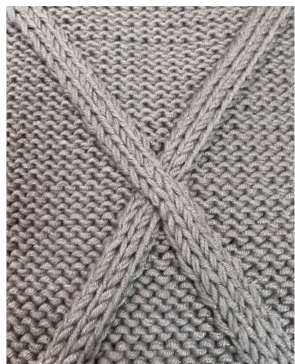
Cast on **80 (84) 92 (96) 108** sts on a 3,5 mm circular needle.

Work *k2, p2* rib between the edge sts.

First r is WS. Continue rib until the work measures **5 (6) 6 (7) 7** cm. Last r is WS.

NOTE: On size 9-10 and 11-12 years, on the last r from WS, increase **2** sts evenly - **98 (110)** sts.

Change to a 4,0 mm circular needle and knit as follows: edge st, **78 (82) 90 (96) 108** sts according to chart, edge st. Continue until the work measures **36 (37) 40 (41) 43** cm. Last r is WS.



NECKLINE AND SHOULDER

RS: Cast off the central **16 (18) 18 (18) 20** sts for the neck, knit to end of r.

Finish each side separately.

Right side:

Continue to cast off **3-2-2-1-1 (3-2-2-1-1) 3-2-2-1-1-1 (3-2-2-1-1-1) 3-2-2-1-1-1** sts for the neck on RS
Knit **0 (2) 2 (4) 4** r.

On next r from WS starts the cast off for the shoulder.

WS: Cast off **8 (9) 9 (10) 12** sts for the shoulder, knit to end of r

RS: Knit to end of r

WS: Cast off **8 (9) 9 (10) 12** sts for the shoulder, knit to end of r

RS: Knit to end of r

WS: Cast off the remaining **7 (6) 9 (10) 11** sts

Left side:

Continue to cast off **3-2-2-1-1 (3-2-2-1-1) 3-2-2-1-1-1 (3-2-2-1-1-1) 3-2-2-1-1-1** sts for the neck on WS.
Knit **0 (2) 2 (4) 4** r.

On next r from RS starts the cast off for the shoulder.

RS: Cast off **8 (9) 9 (10) 12** sts for the shoulder, knit to end of r

WS: Knit to end of r

RS: Cast off **8 (9) 9 (10) 12** sts for the shoulder, knit to end of r

WS: Knit to end of r

RS: Cast off the remaining **7 (6) 9 (10) 11** sts

Sew the shoulder seams together.

UK

SLEEVES

Make 2

Cast on **50 (50) 50 (54) 58** sts on a 3,5 mm circular needle and knit *k2, p2* rib between the edge sts. First r is WS. Knit until the work measures **5 (6) 6 (7) 7** cm. on the last r from WS, increase **0 (2) 4 (4) 2** sts evenly – **50 (52) 54 (58) 60** m.

Change to a 4,0 mm circular needle and knit as follows: edge st, **48 (50) 52 (56) 58** sts according to chart, edge st.

When the work measures **6 (7) 7 (8) 8** cm, increase **1** st on each side, inside the edge sts.

Repeat increases on every 5th r **9 (4) 2 (3) 4** more times, increase on every 7th r **0 (6) 9 (9) 9** times - **70 (74) 78 (84) 88** sts.

When the work measures **29 (33) 38 (41) 43** cm, cast off all sts from RS

NECK EDGE

With a 3,5 mm circular needle, pick up **80 (84) 88 (92) 96** sts from RS around the neck edge. Work *k2, p2* rib until the work measures **5 – 6** cm. Cast off in rib, fold the edge towards the WS and sew it in place.

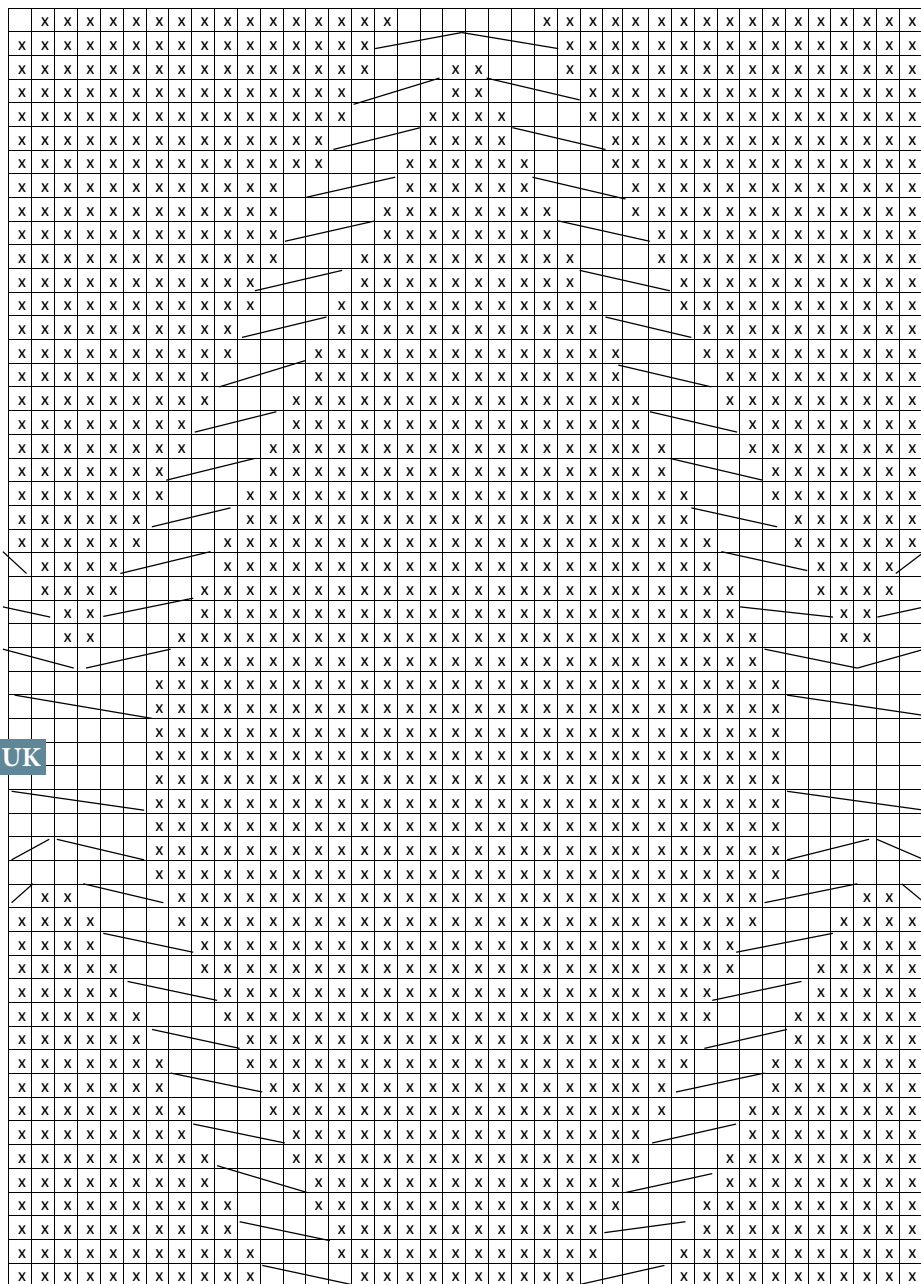
Sew in the sleeves and sew the sides together in the edge sts.



CHART

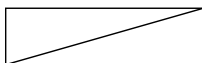
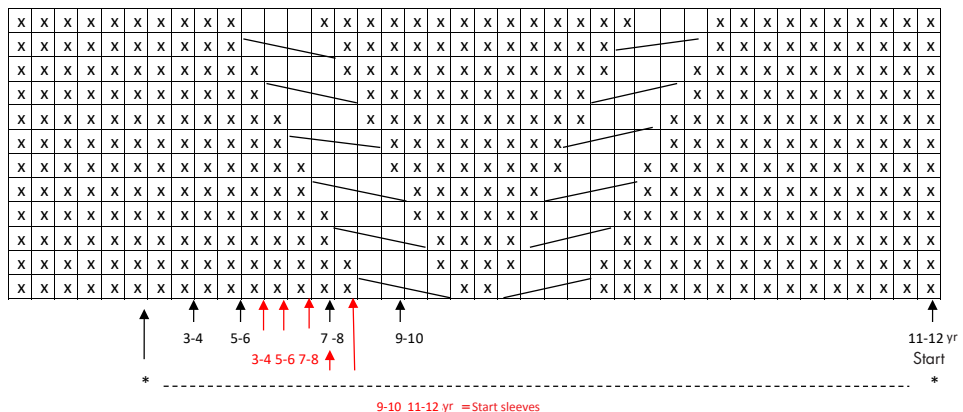
The chart shows all rows. First row is RS. The row begins at "Start" and then repeat the chart from *-* to the end of the row.

If there aren't enough sts for a cable in the sides, knit stocking sts or make a cable with the remaining sts.

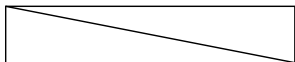


CHART

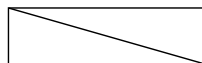
Continuation



Cable 4 sts = Put 1 st on a cable needle behind the work. K3, purl the sts from the cable needle.



Cable 6 sts = Put 3 sts on a cable needle in front of the work. K3, k the sts from the cable needle.



Cable 4 sts = Put 3 sts on a cable needle in front of the work. P1, k the sts from the cable needle.



K from RS and p from WS



P from RS and k from WS

UK

Good to know

Needle Size + Tension

Knitters knit very differently: some knit with a needle size 2,0 mm and obtain the same size of design quality as a person who knits with a needle size 4,0 mm. We owe this knowledge to the team of knitters who join us.

The key to knit a specific size is a lot about the knitting style/hands/skills, rather than the size of needles.

Therefore, we will recommend a range of needle sizes.



Go handmade
kvalitetsdesign i en unik stil