

Go handmade

quality design in a unique style



Made with love

Accessories universe
- for you who knit and crochet



The best for me and my friends

It has been a great journey with a lot of joy to develop all the wonderful products, which we finally can present in this catalog. We could have continued to improve the products furthermore since the everlasting process kept the ideas coming nonstop. It was therefore not easy to say: Now it is fully perfect.

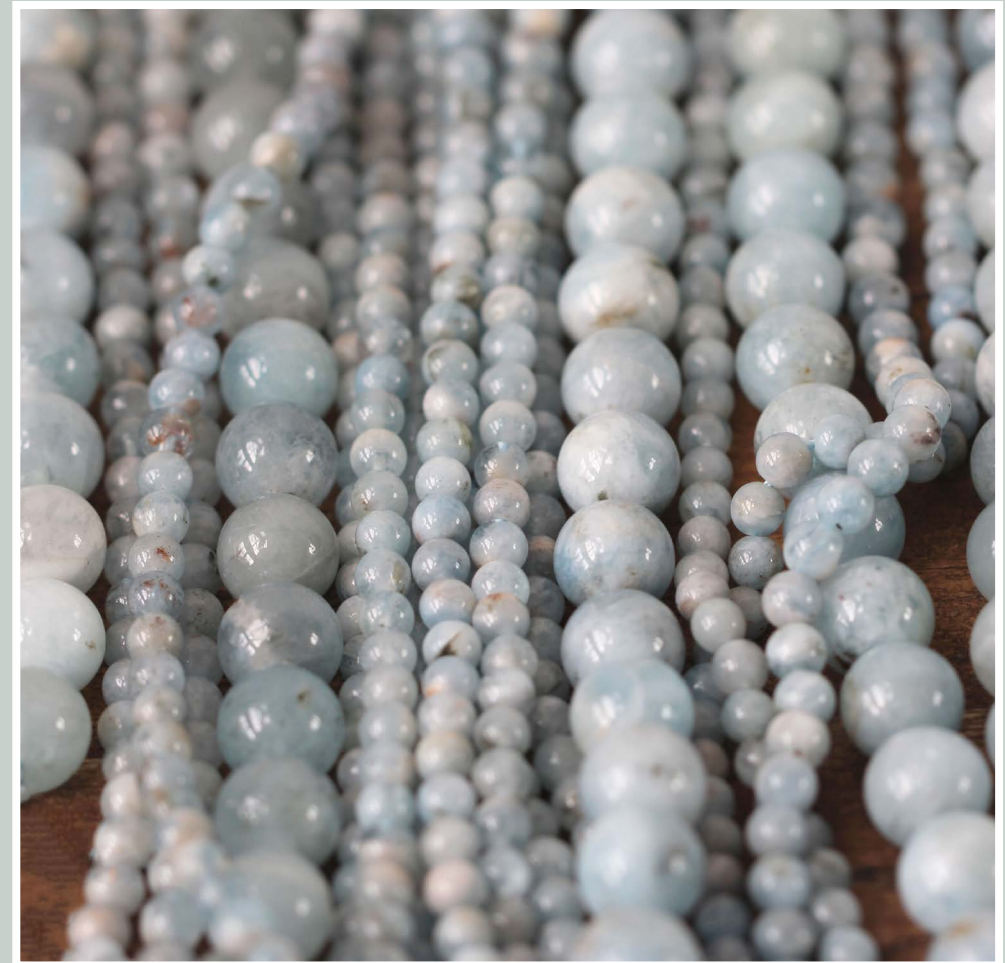
The accessories for all the fantastic items that we produce with our knitting and crochet need to be stylish and of a quality we are proud of.

During the whole process to bring together the numerous styles into a rounded collection, I had an ear worm (as it is called) - Kim Larsen's "Det bedste til mig og mine venner" (The best for me and my friends). With these words, I hope that all the wonderful products can contribute to add more finish look, touch and soul to the knit and crochet work.

Go handmade

Hanne Tolberg

May we offer style and luxury for your knitting projects. The indispensable stitch marker - now with the finest beads straight from nature's treasure trove. The markers are fitting all knitting needles up to size x.



The bead with the sky's colours AQUAMARINE

Is a beautiful and popular stone, named after the Latin word for seawater. The stone is available in many shades, from the brightest light to awesome blue sea shades. In "the old days" many believed that this stone protected sailors at the sea.



Yarn: Soft Bamboo "double"

Stitch marker set With Canvas bag

” *Stitch markers made of wonderful material, and with the traditional keychain that opens easily, the storage is under control.*



Yarn: Soft Bamboo "double" and Deli Mohair



Item no.: 19300
Stitch Marker, Wire
Freshwater Pearls
Off-white/set 5



Item no.: 19301
Stitch Marker, Wire
Freshwater Pearls
Grey/set 5



Item no.: 19302
Stitch Marker, Wire
Freshwater Pearls
Black/set 5



Item no.: 19303
Stitch Marker, Wire
Aquamarin/set 5



Item no.: 19304
Stitch Marker, Wire
Crystal Quartz/set 5



Item no.: 19305
Stitch Marker, Wire
Aventurin/set 5



Item no.: 19306
Stitch Marker, Wire
Smoky Quartz/set 5



Item no.: 19307
Stitch Marker, Wire
Lava/set 5



Item no.: 19308
Stitch Marker, Wire
Black Agate/set 5

Eternally beautiful and elegant FRESHWATER PEARLS



These pearls come from shells that were opened and into which small "grains" of mother-of-pearl were inserted. A few years afterwards, when the shells are picked up, each one will often contain several freshwater pearls of different sizes and colours.

The natural mother-of-pearl shades vary between natural white pastel shades and several shades of grey. The shapes are very irregular as so often when created by nature itself - round pearls are very rare.



Yarn: Soft Bamboo "double"

” *Each pearl is unique and very stylish. A favourite for many.*



Item no.: 19316
Stitch Marker, Ring
Freshwater Pearls, Grey
With flower/set 6



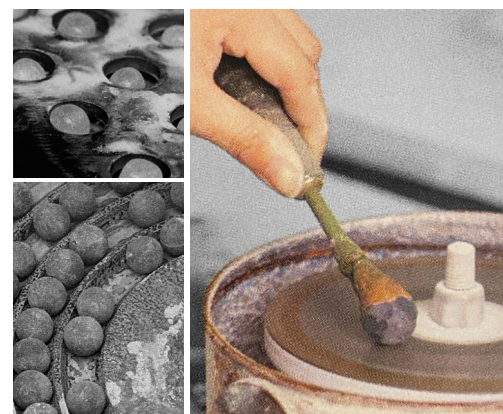
Item no.: 19315
Stitch Marker, Ring
Freshwater Pearls, Off-white
With flower/set 6



Item no.: 19317
Stitch Marker, Ring
Freshwater Pearls, Black
With flower/set 6

From raw material to handcrafted STITCH MARKERS

Natural precious stones exist in many varieties in various locations all over the world. They constitute a completely unique and beautiful material from our nature's own treasury, created many centuries ago. Each stone is entirely unique, diversity from stone to stone happen - it is an exceptional characteristic of a natural product.



In the following pictures we show the process of turning raw material into round and faceted stones. Specialist are checking the quality, such as the colour and texture of each raw stone. Cutting the raw stone from irregular and big shape into regular and small shape.

Round stones: small pieces of raw stones are put into a mould and shaken until they have the round and smooth surface as required. Piercing machines with different size of needles are used to make the holes.

Faceted stones: there are many varieties of facet shapes and it requires great handcrafted skills to master the techniques.

All finished stones are undergoing a final examination, one by one, a control made by hands.

Stitch marker set With Canvas bag



Item no.: 19318
Stitch Marker, Ring
Black agate
With Flower/set 6



Item no.: 19319
Stitch Marker, Ring
Aventurin
With Flower/set 6



Item no.: 19320
Stitch Marker, Ring
Smoky Quartz
With Flower/set 6



Item no.: 19321
Stitch Marker, Ring
Lava
With Flower/set 6



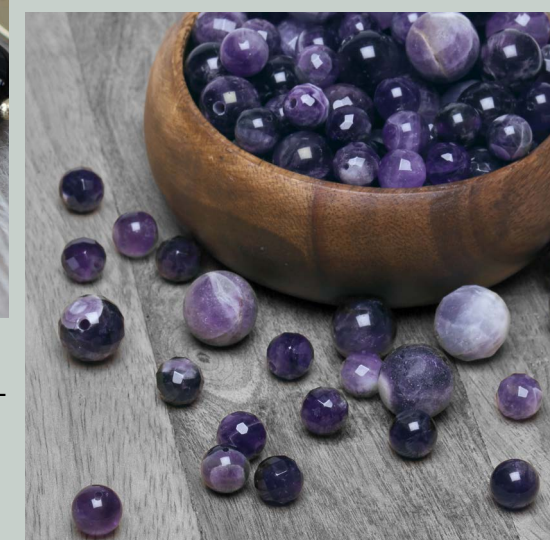
Item no.: 19322
Stitch Marker, Ring
Crystal Quartz
With Flower/set 6

Classical and timeless beads

LUXURY FOR YOUR KNITTING PROJECTS



The finest polished beads and the production of the finished stitch markers require a lot of work by hand and are another essential detail in the production of such elegant stitch markers.



Amethyst

Amethyst belongs to the Quartz family, and their colour variation reaches from a delicate purple to a deep shade of purple.



Rose quartz

If rose is your colour, rose quartz is a stone available in many pink shades - from the softest smooth nuances through a shade close to medium pink. The rose quartz stone is mostly known as a symbol for love. It is connected to all the positive energies of love.



Black Agate

Agate exists in many different colours. Agates are found in most parts of the world. The black agate stands as a symbol for peace and harmony among others.

Stitch marker mix With Canvas bag



The stitch markers are made by hand. A wire is inserted through the previously drilled hole of the pearl/bead and then covered by a beautiful little metal bead at the bottom. The top part of this wire is carefully bent with a special tool (needle nose pliers) to form the loop. It is then twisted around itself three times before it is cut and pushed tightly toward the pearl/bead.

The ring on top of the stitch marker is cut by hand and both ends are carefully joined together to form a ring, both ends neatly coming together with the tiniest gap possible.



” The pictures shown are just a small part of our surprise set. It can come in various stones and different colours.



Item no.: 19333
Stitch Marker, Ring
Surprise
With star/set 6



Item no.: 19330
Stitch Marker, Ring
Black stone
With star/set 6

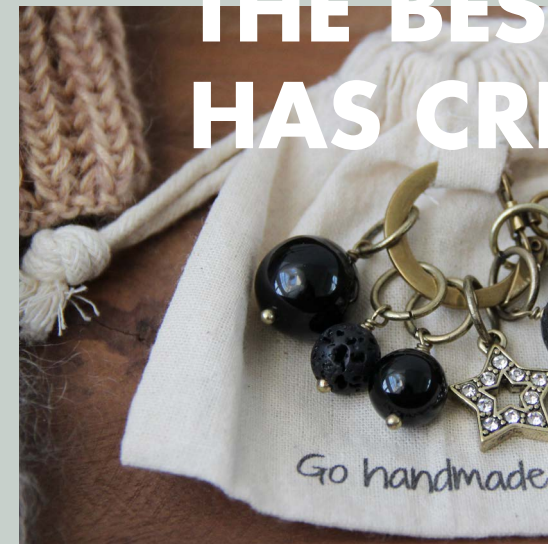


Item no.: 19331
Stitch Marker, Ring
Aquamarin
With star/set 6



Item no.: 19332
Stitch Marker, Ring
Rose Quartz
With star/set 6

Much love for something of **THE BEST NATURE HAS CREATED FOR US**

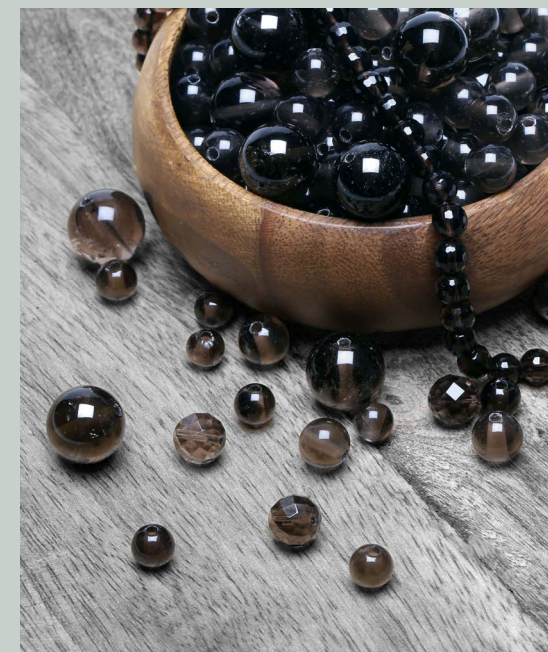


When it is difficult to decide and one would like some more variety, we have put together a few sets with various sizes and kinds of beads.



Crystal quartz

Is found in mountainous regions all over the world. Its symbolism says that the stone promotes the ability to concentrate and that it brings clarity.



Smoky quartz

Is a stone that you can find in multiple shades and transparencies - from brown to grey-brown. Smoky quartz is among others known to strengthen and preserve positive energy.



Lava

Lava stone or "day rock" are stones and boulders that were formed by a volcano's magma. When magma reaches the surface, be it above or under water, it is called lava.

Mix & match stitch marker



Item no.: 19225
Canvas bag/1 pc.



Item no.: 19230
Keyring
Antique/1 pc.



Item no.: 19231
Keyring
Silver/1 pc.



Item no.: 19370
Stitch Marker
Metal ball
Silver/set 2



Item no.: 19373
Stitch Marker
Metal star
Silver/set 2



Item no.: 19371
Stitch Marker
Metal flower
Antique/set 2



Item no.: 19372
Stitch Marker
Metal star
Antique/set 2



Item no.: 19374
Stitch Marker
Metal ball
Antique/set 2



Item no.: 19345
Stitch Marker
Black Agate
Antique, ring/set 2



Item no.: 19346
Stitch Marker
Crystal Quartz
Antique, ring/set 2



Item no.: 19347
Stitch Marker
Aventurin
Antique, ring/set 2



Item no.: 19348
Stitch Marker
Smoky Quartz
Antique, ring/set 2



Item no.: 19349
Stitch Marker
Aquamarin
Antique, ring/set 2



Item no.: 19350
Stitch Marker
Lava
Antique, ring/set 2



Item no.: 19351
Stitch Marker
Freshwater Pearls,
Off-white
Antique, ring/set 2

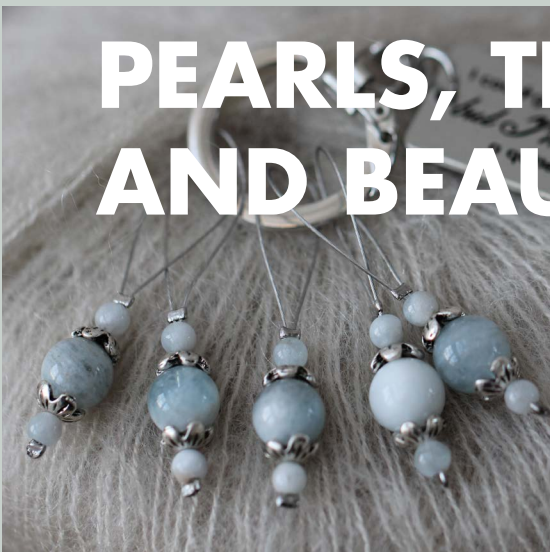


Item no.: 19352
Stitch Marker
Freshwater Pearls,
Grey
Antique, ring/set 2

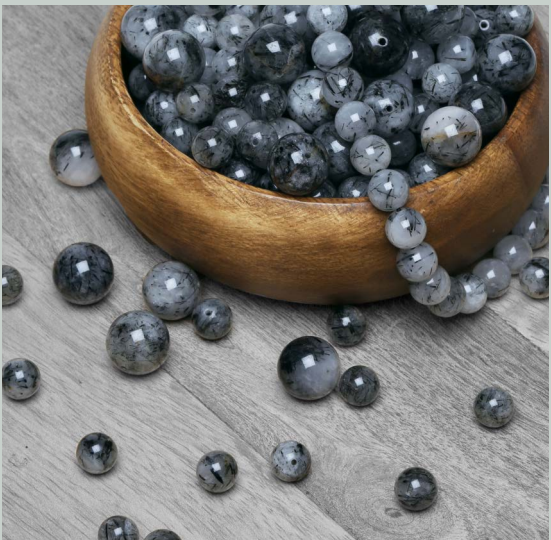


Item no.: 19353
Stitch Marker
Freshwater Pearls,
Black
Antique, ring/set 2

PEARLS, THE SIMPLE AND BEAUTIFUL ONES



This stitch marker set is composed of aquamarine pearls, twisted with small fine metal pieces and perfected with the softest ring - fitting all knitting needle sizes.



Jasper

Jasper is an old gemstone reaching way back into history where it was considered a valuable gemstone.



Aventurine

Aventurine belongs to the quartz family and is characterised by its semi-transparency with visible inclusions of small flat mineral grains.



Freshwater pearls

The natural mother-of-pearl colours vary from natural white pastel shades to several shades of grey.

Row counter chain

The world of knitting can be an **AGREEABLE WORLD**

I have talked about that with a fantastic knitter, Marianne, who has been knitting for over 50 years and is one of the best of Go handmade's helpers and advisors.

Even though Marianne has been knitting for so many years and holds the needles in her hands every day, she only recently met the "Row counting chain". And it was a whole new world, as Marianne said. Now, it is very often, with knitters that you have to drag the words out of them, and so I persisted to ask further:

I asked Marianne what was so genius about the Row counter chain: it is like a stitch marker, only so much better because it allows to count the rows one knits. You don't need to think about if you have thought about turning the row counter or draw a line every time you have finished a row. The row counter chain simply is moved every time when a row is been done, no matter if you are counting or not - just like a stitch marker. I still didn't get it how Row counter chain helped counting, and so I had to ask again: You remember because you slip the stitch marker on the needle when you start the row, and so every time when you knit a row, you slide it from the needle to continue - genius. Now I understood - yes, it makes sense and is a great help.



Yarn: Tencel Bamboo "double" and Deli Mohair

” The most popular bead for many - a great combination with the Vintage like marking rings. The beads are carefully selected by shape and size.



Item no.: 19422
Row counter chain
Lava
Antique, 10 rings



Item no.: 19421
Row counter chain
Freshwater pearls
Off-white
Antique, 10 rings



Item no.: 19420
Row counter chain
Mixed stones
Antique, 10 rings



Pretty, prettier, the prettiest **ROW COUNTER CHAIN**

Row counter chain are mostly used for two things: counting rows or for increases and decreases.

The Row counter chain is put on the needle at the start of a row. Every time when a row is done, you slide it one ring down - that way way you know how many rows you have knit.

You can also use it when you for example, need to increase/decrease 6 times every other row, moving it for each occurrence one ring further.



Row counter chain



Item no.: 19424
Row counter chain
Wooden
Numbers 1-10, UK

Item no.: 19423
Row counter chain
Wooden
Numbers 1-10, DK



Item no.: 19425
Row counter chain
Wooden
Numbers 1-10, DE

Item no.: 19426
Row counter chain
Wooden
Numbers 1-10, FR

Item no.: 19427
Row counter chain
Wooden
Numbers 1-10, NL

Item no.: 19428
Row counter chain
Wooden
Numbers 1-10, SE



The story behind THE PRODUCTS

We want to create solid products and present them on a platform where it also is a tribute to all the talented and not least professional people who have worked hard and have specialised in a craft that is the basis for a good and perfectly shaped product. One example are our wooden stitch markers. It was an almost impossible task to get the logo to look steady and sharp. Thanks to the commitment and the know-how of many good forces, striving together in the endeavour to make these stitch markers the best ever, it was decided that the solution consisted in starting over. A very much more detailed mold needed to be created, one that could capture all the small details of the logos. More than one attempt were needed, but it finally worked out.



Stitch markers

THE COLOURFUL STITCH MARKERS

Our colourful stitch markers are easy to place in the yarn or on the needle. They are light weighted and that makes them the perfect fit for fine and light yarn.

Stitch markers come in a very practical and nice little metal box, which makes it easy to keep them organized.



Item no.: 19390
Stitch Markers
In metal box
Multicolor/set 100



Item no.: 19391
Stitch Markers
In metal box
Metallic colors/set 100

” These are products with a story - beautiful products that can stand the test of time over many years - maybe even be a heirloom.



Item no.: 19410
Stitch Marker
Wooden, Numbers
With Canvas bag/set 10



Item no.: 19411
Stitch Marker
Wooden, Crochet
With Canvas bag/set 8



Item no.: 19412
Stitch Marker
Wooden, Knitting
With Canvas bag/set 8



Item no.: 19401
Keyring with
3 Crochet hooks, 3 Markers
Rose Gold/set 1



Item no.: 19402
Keyring with
3 Crochet hooks, 3 Markers
Grey/set 1



Item no.: 19400
Keyring with
3 Crochet hooks, 3 Markers
Silver/set 1

Stitch wire & stoppers



Item no.: 19201
Stitch wire
5m x D2,5/1,5mm
For needles up to 6 mm
White



Item no.: 19200
Stitch wire
5m x D2,5/1,5mm
For needles up to 6 mm
Mushroom



Item no.: 19199
Stitch wire
5m x D2,5/1,5mm
For needles up to 6 mm
Vintage Rose



Item no.: 19193
Stitch wire
5m x D2,5/1,5mm
For needles up to 6 mm
Ice Blue



Item no.: 19194
Stitch wire
5m x D2,5/1,5mm
For needles up to 6 mm
Baby Pink



Item no.: 19195
Stitch wire
5m x D2,5/1,5mm
For needles up to 6 mm
Pastel Green



Item no.: 19190
Stitch wire
5m x D2,5/1,5mm
For needles up to 6 mm
Grey



Item no.: 19191
Stitch wire
5m x D2,5/1,5mm
For needles up to 6 mm
Green



Item no.: 19192
Stitch wire
5m x D2,5/1,5mm
For needles up to 6 mm
Curry



Item no.: 19196
Stitch wire
5m x D2,5/1,5mm
For needles up to 6 mm
Lavender



Item no.: 19197
Stitch wire
5m x D2,5/1,5mm
For needles up to 6 mm
Vintage Yellow



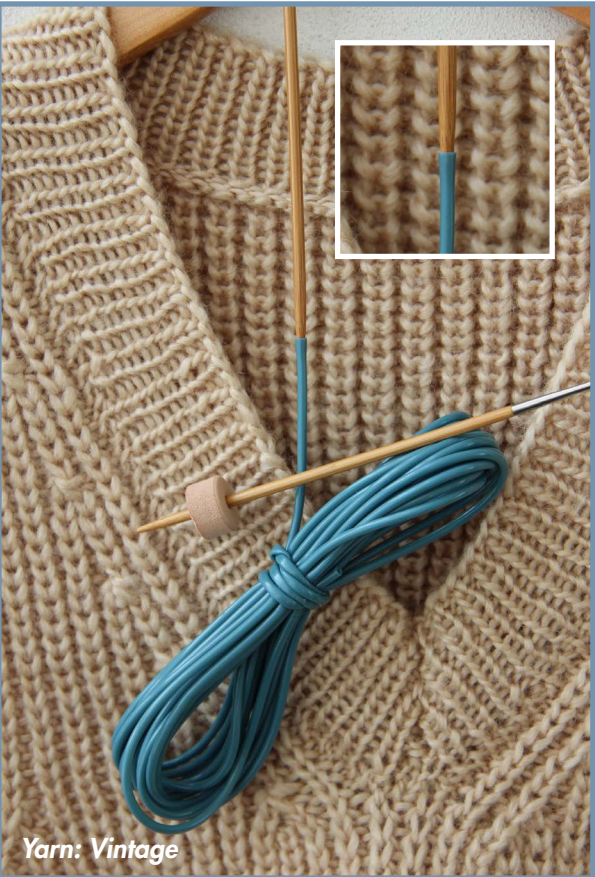
Item no.: 19198
Stitch wire
5m x D2,5/1,5mm
For needles up to 6 mm
Blue Grey

STITCH WIRE

- wires to hold stitches

When you need a storage place for your stitches and don't have enough needles/circular needles, Or when you want to try on a sweater and the circular needle is not long enough to hold all the stitches without pushing them together.

The wire is cut according to the project. It is easy to fix it onto the tip of the knitting needle, the material almost sucking itself onto the needle, no matter if wood or metal. The stitches can then easily be slipped from the circular needle. You can affix a stitch stopper at each end of the stitch holder to make sure to keep the stitches in place, or you can tie a knot at both ends.



Yarn: Vintage

STITCH STOPPER

Stitch stoppers are irreplaceable - they are made of a foam material which makes them easy to be placed on the needles. They stay securely on the needle and make sure that your stitches do not slip off the needles. Stitch stoppers come in some beautiful soft colours and in three different sizes for both thin and thick knitting needles, approx. up to 8 mm.

And last but not least, a very practical zipper bag is included, which makes it easy to keep them organized.

The stitch stoppers can also be used on Go handmade's stitch wire.

Yarn: Vintage



Yarn: Tencel Bamboo "fine"



Item no.: 19208
Stitch stopper Mix in zipper bag
"It's the little things"
24 pcs.



Item no.: 19205
Stitch stopper Mix in zipper bag
"I could give up yarn"
24 pcs.



Item no.: 19206
Stitch stopper Mix in zipper bag
"These are a few of my"
24 pcs.



Item no.: 19207
Stitch stopper Mix in zipper bag
"Good stuff"
24 pcs.



Yarn: Bohème Velvet "double" and Vintage

Leather strap & Crochet Organiser



Item no.: 19110
Crochet organiser
Beige/Cotton
13 x 18.5 x 9.5 x 6 cm



Item no.: 19111
Crochet organiser
Beige flower/Cotton
13 x 18.5 x 9.5 x 6 cm



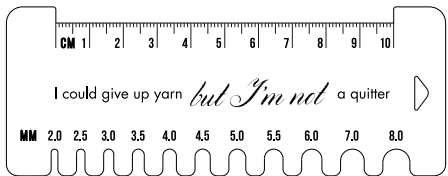
Item no.: 19112
Crochet organiser
White flower/Cotton
13 x 18.5 x 9.5 x 6 cm



Wooden Gauge Ruler & Wool Comb



Item no.: 19220
Wool comb
With Canvas bag



Knitting & Crochet
GAUGE RULERS

You can check your needle size with this ruler.



Item no.: 22492
Leather strap
Natural
1 m x 18 mm



Item no.: 22493
Leather strap
Dark brown
1 m x 18 mm



Item no.: 22494
Leather strap
Black
1 m x 18 mm



Item no.: 11037
Leather string, round
Natural
2 m x 2 mm



Item no.: 11038
Leather string, round
Natural
2 m x 2 mm



Item no.: 11039
Leather string, round
Natural
2 m x 2 mm



Item no.: 19223
Wooden Gauge Ruler
Crochet
9 x 10,4 cm



Item no.: 19224
Wooden Gauge Ruler
Knitting
9 x 10,4 cm



Knitted in
Soft Bamboo "double"

” The small ruler
in MDF wood
helps you
calculate the
proper gauge.



Item no.: 19221
Wooden Gauge Ruler
Crochet
13 x 5 cm



Item no.: 19222
Wooden Gauge Ruler
Knitting
13 x 5 cm



Stitch holder

” The stitch holders in the lightweight aluminum material are very practical to put your knitted stitches on. If for example, you need the needles for another part of a project or maybe to store your knitting samples - there are multiple possibilities.



Knitted in Vintage and Cocktail "deluxe"



Item no.: 19157
Stitch Holder
Rose
12 cm



Item no.: 19158
Stitch Holder
Blue
12 cm



Item no.: 19161
Stitch Holder
Blue
16 cm



Item no.: 19162
Stitch Holder
Beige
16 cm



Item no.: 19160
Stitch Holder
Rose
16 cm



Item no.: 19159
Stitch Holder
Beige
12 cm



Item no.: 19163
Stitch Holder
Rose
20 cm



Item no.: 19164
Stitch Holder
Blue
20 cm



Item no.: 19165
Stitch Holder
Beige
20 cm



Item no.: 19166
Stitch Holder
Rose, set 3
12/16/20 cm



Item no.: 19167
Stitch Holder
Blue, set 3
12/16/20 cm



Item no.: 19168
Stitch Holder
Beige, set 3
12/16/20 cm

Fabric & Felt

Item no.: A111
Felt, 100% Polyester
Beige
50 x 70 cm



Crocheted in Cosy



Item no.: A09
Felt, 100% Polyester
Offwhite
50 x 70 cm



Item no.: A112
Felt, 100% Polyester
Light brown
50 x 70 cm



Item no.: A33
Felt, 100% Polyester
Light grey
50 x 70 cm



Item no.: A71
Felt, 100% Polyester
Dark grey
50 x 70 cm



Item no.: A26
Felt, 100% Polyester
Black
50 x 70 cm



Item no.: 17020
Fabric, 100% Cotton
Rose on beige
47 x 55 cm



Item no.: 17137
Fabric, 100% Cotton
Beige
47 x 55 cm



Crocheted in Cosy



Item no.: 17019
Fabric, 100% Cotton
Rose on white
47 x 55 cm



Item no.: 17033
Fabric, 100% Cotton
Black check
47 x 55 cm



Item no.: 17032
Fabric, 100% Cotton
Medium blue
47 x 55 cm



Item no.: 17027
Fabric, 100% Cotton
Medium beige
47 x 55 cm



Item no.: 17021
Fabric, 100% Cotton
Offwhite "doll"
47 x 55 cm

Zipper - Metal, Nylon



Item no.: 22315
Metal zipper
Pink/Bronze
25 cm



Item no.: 22321
Metal zipper
Blue/Bronze
25 cm



Item no.: 22252
Metal zipper
Black/Bronze
25 cm



Item no.: 22327
Metal zipper
Beige/Bronze
25 cm



Item no.: 22258
Metal zipper
Black/Silver
20 cm



Item no.: 22246
Metal zipper
Black/Gold
20 cm



Item no.: 22248
Metal zipper
Black/Bronze
20 cm



Item no.: 22322
Metal zipper
Beige/Silver
20 cm



Item no.: 22323
Metal zipper
Beige/Gold
20 cm



Item no.: 22324
Metal zipper
Beige/Bronze
20 cm



Item no.: 22650
Nylon zipper
Terracotta/Bronze
30 cm



Item no.: 22651
Nylon zipper
Dark Grey/Bronze
30 cm



Item no.: 22652
Nylon zipper
Light Grey/Bronze
30 cm



Item no.: 22653
Nylon zipper
Beige/Bronze
30 cm



Item no.: 22654
Nylon zipper
Black/Bronze
30 cm

” Everything we do, we do with passion, love and with all our heart. I hope that our collection will become the favourite of many.



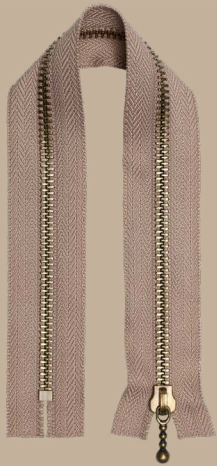
ZIPPERS WITH A VINTAGE LOOK



Item no.: 22695
Metal zipper
Beige/Bronze
35 cm



Item no.: 22685
Metal zipper
Grey/Bronze
35 cm



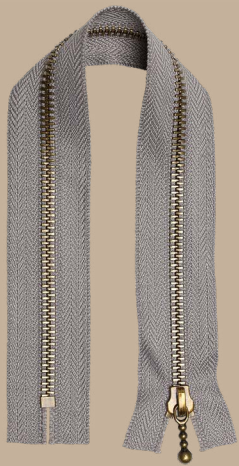
Item no.: 22690
Metal zipper
Beige/Bronze
30 cm



Item no.: 22253
Metal zipper
Black/Silver
30 cm



Item no.: 22254
Metal zipper
Black/Gold
30 cm



Item no.: 22680
Metal zipper
Grey/Bronze
30 cm

Woven labels - folded

” Add the labels for a finishing touch. Finish a beautiful project with a small greeting.



Item no.: 16270
Made by Bedste
Grey/Set 10
35x19 mm, folded



Item no.: 16173
Made with Love
Grey/Set 10
35x19 mm, folded



Crocheted in Bohème Velvet "double"



Item no.: 16271
Self Made
Grey/Set 10
35x19 mm, folded



Item no.: 16183
Made by Tante
Grey/Set 10
35x19 mm, folded



Item no.: 16179
Made by Moster
Grey/Set 10
35x19 mm, folded



Item no.: 16175
Made by Farmor
Grey/Set 10
35x19 mm, folded



Item no.: 16177
Made by Mormor
Grey/Set 10
35x19 mm, folded



Item no.: 16181
Made by Faster
Grey/Set 10
35x19 mm, folded



Item no.: 16171
Handmade with love
Grey/Set 10
50x11,5 mm



Item no.: 16240
Made by Mor
Grey/Set 10
50x11,5 mm



Item no.: 16241
Made by Mormor
Grey/Set 10
50x11,5 mm



Item no.: 16242
Made by Farmor
Grey/Set 10
50x11,5 mm



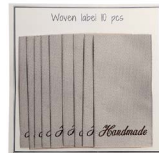
Item no.: 16243
Made by Mom
Grey/Set 10
50x11,5 mm



Item no.: 16244
Made by Grandma
Grey/Set 10
50x11,5 mm



Item no.: 16184
Handmade
Black/Set 10
60x32 mm



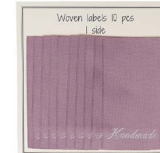
Item no.: 16185
Handmade
Beige/Set 10
60x32 mm



Item no.: 16186
Handmade
Dark Grey/Set 10
60x32 mm



Item no.: 16187
Handmade
Dark Lavender/Set 10
60x32 mm



Item no.: 16188
Handmade
Rose/Set 10
60x32 mm



Item no.: 16189
Handmade
Nude/Set 10
60x32 mm



Crocheted in Cosy

WOVEN LABELS

When we have turned and turned a design, a pattern or that special detail that brings magic to your craft on a regularly basis, that is exactly what makes the products of Go Handmade makes unique.



Knitted in Soft Bamboo "double"

Woven labels - folded

” Go Handmade’s philosophy shall always be unique. For us, it is very important that every detail is well thought through. Of course, the possibilities are often countless, but when we have a design or an image put to rest for several days and look over it again, mostly there is one that pops out.



Stylish classics

WOVEN LABELS

The joy of work is to feel in our hearts that it all feels just right. It just can't be more beautiful.

Item no.: 16280 Made with Love Sky Blue/Set 10 35x19 mm, folded	Item no.: 16103 Made with Love Off-white/Set 10 35x19 mm, folded	Item no.: 16101 Mit Liebe gemacht Off-white/Set 10 35x19 mm, folded	Item no.: 16102 Fait avec amour Off-white/Set 10 35x19 mm, folded	Item no.: 16100 Made with Love Off-white/Set 10 35x19 mm, folded	Item no.: 16104 Made with Love Off-white/Set 10 35x19 mm, folded

Item no.: 16105 Made by Bedste Sky Blue/Set 10 35x19 mm, folded	Item no.: 16232 Made by Bedste Off-white/Set 10 35x19 mm, folded	Item no.: 16105 Made by Farmor Off-white/Set 10 35x19 mm, folded	Item no.: 16106 Made by Mormor Off-white/Set 10 35x19 mm, folded	Item no.: 16108 Handmade Off-white/Set 10 35x19 mm, folded	Item no.: 16107 Handmade with love Off-white/Set 10 35x19 mm, folded

Item no.: 162260 Made by Grandma Sky Blue 50x11.5 mm	Item no.: 16256 Made by Mor Sky Blue 50x15 mm	Item no.: 16255 Handmade with love Sky Blue 50x11.5 mm	Item no.: 16257 Made by Mormor Sky Blue 50x15 mm	Item no.: 16258 Made by Farmor Sky Blue 50x11.5 mm	Item no.: 16259 Made by Mom Sky Blue 50x11.5 mm

Beads "deluxe" - 30g

D ± 2,1 - 2,3 mm
Hole ± 0,9 - 1,0 mm



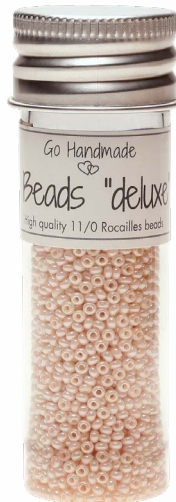
Item no.: 15010
Glass Beads
White/30g



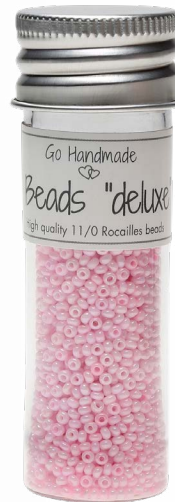
Item no.: 15011
Glass Beads
Pearl White/30g



Item no.: 15012
Glass Beads
Pearl Creme/30g



Item no.: 15013
Glass Beads
Vanilla/30g



Item no.: 15014
Glass Beads
Light Pink/30g



Item no.: 15015
Glass Beads
Pink/30g



Item no.: 15016
Glass Beads
Purple/30g



Item no.: 15017
Glass Beads
Dark Purple/30g



Item no.: 15018
Glass Beads
Metallic Grey/30g



Item no.: 15019
Glass Beads
Grey/30g



Item no.: 15020
Glass Beads
Silver/30g



Item no.: 15021
Glass Beads
Red/30g



Item no.: 15022
Glass Beads
Metallic Red/30g



Item no.: 15023
Glass Beads
Kiwi Green/30g



Item no.: 15024
Glass Beads
Smaragd Green/30g



Item no.: 15025
Glass Beads
Green/30g



Item no.: 15026
Glass Beads
Dark Green/30g



Item no.: 15027
Glass Beads
Turquoise/30g



Go handmade Rocailles

THE HISTORY OF THE GLASS BEADS

Go Handmade Rocaille glass beads are among the very best to be found. The finished beads have gone through many steps in developing from raw material to beautiful, fully cast, finished beads.

When it comes to quality in relation to glass beads, it is measured by how uniform the glass beads are in size, shape and color.

Since glass is also a living material in the manufacturing process, it requires the very best hands and eyes to ensure nearly uniform beads. A training process of people who can do it can only be achieved through hard work.

We are talking about a tolerance of only 0.2mm for the whole bead and 0.1mm for the hole size. The tolerance with respect to the beads is in the range of 2.1mm - 2.3mm and the hole 0.9 - 1.0mm, with very few deviations.

The path of glass beads from raw material to finished beads involves many different stages. The raw material has to go through a melting process that takes more than 6 hours and where the temperature exceeds 2000 degrees. Once the molten mass has reached the right consistency, the glass mass comes in a number of special shapes and the path from the mass to finished beads is created.

Making the shapes requires a lot of manual work and is another essential detail for making the most beautiful beads. The exact look of the molds is a closely guarded secret - or recipe, you might say, that the factory cares deeply about.

The hands and eyes that sort the many millions of tiny beads are also crucial for the ultimate quality of absolute top class. No machine can do this job - it's the human eye and the handwork. As with all triages, there will be rejections, so here too. Only the best beads go further. The beads that do not meet the requirements are not wasted, they are re-introduced into the manufacturing process.

Beads "deluxe" - 30g

D ± 2,1 - 2,3 mm
Hole ± 0,9 - 1,0 mm



Item no.: 15035
Glass Beads
Pearl Beige/30g



Item no.: 15034
Glass Beads
Yellow/30g



Item no.: 15036
Glass Beads
Beige/30g



Item no.: 15037
Glass Beads
Nougat/30g



Item no.: 15038
Glass Beads
Terracotta/30g



Item no.: 15039
Glass Beads
Apricot/30g



Item no.: 15040
Glass Beads
Orange/30g



Item no.: 15041
Glass Beads
Espresso/30g



Item no.: 15042
Glass Beads
Metallic Gold/30g



Item no.: 15043
Glass Beads
Black/30g



Item no.: 15044
Glass Beads
Caramel/30g



Item no.: 15028
Glass Beads
Sea Blue/30g



Item no.: 15029
Glass Beads
Persian Green/30g



Item no.: 15030
Glass Beads
Blue/30g



Item no.: 15031
Glass Beads
Petrol/30g



Item no.: 15032
Glass Beads
Metallic
Smaragd Green/30g



Item no.: 15033
Glass Beads
Metallic Blue/30g



The keychain is crocheted with Beads "deluxe" Silver glass beads and Bead "deluxe" Grey Tone yarn.



Most of the beads' beautiful colors and finishes are what is called Baked finishes - meaning that, they have been glazed. Although the beads have a durable surface, they should not be in direct contact with water and soap for extended periods of time. In order to protect the beads and their colors from the wear and tear of time, we recommend that you be gentle when washing - that means only hand washing in lukewarm water.

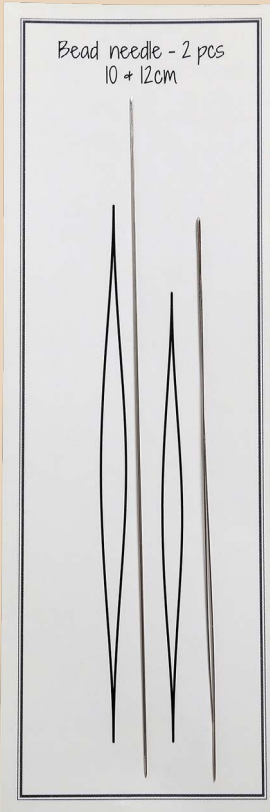
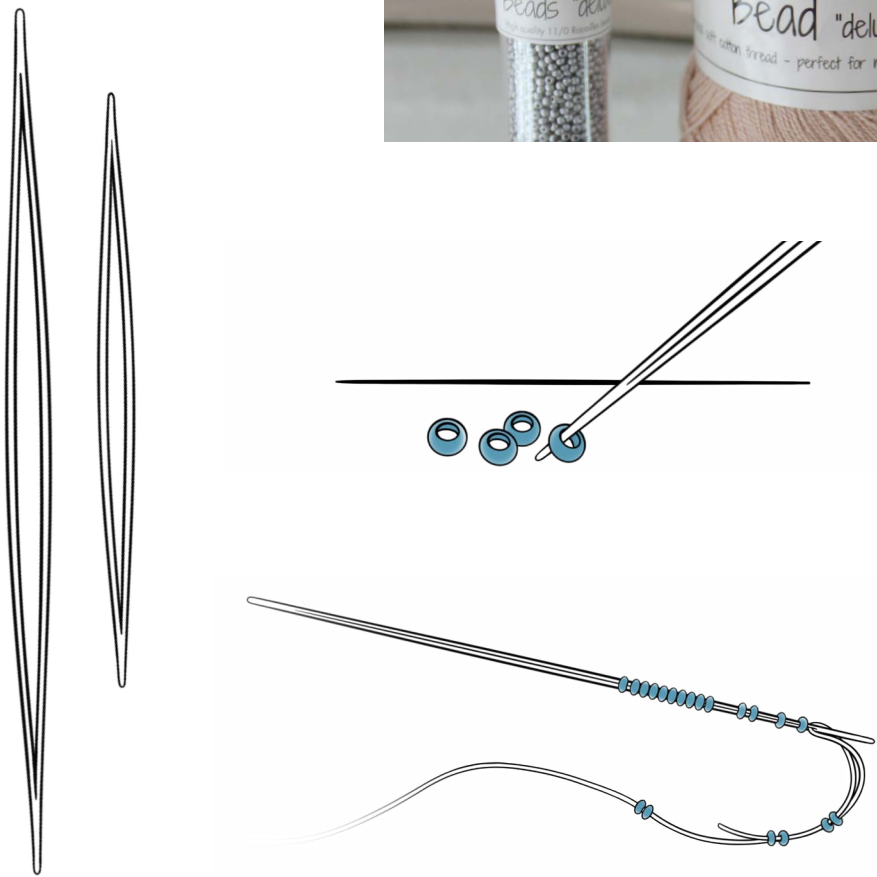


GLASS BEADS - BEADS "DELUXE"

The beads are packed in a beautiful small acrylic bottle with an aluminum lid - the small acrylic bottles each contain 30g - approx. 3,000 pcs. beads.



Bead "deluxe" - 50g
Bead Needles



Item no.: 15080
Bead Needles
10 cm, 12 cm
Set 2

Perfect for the glass beads

BEAD NEEDLES & BEAD "DELUXE"



Item no.: 15060
Bead "deluxe"
White
50 g/ ± 340 m



Item no.: 15061
Bead "deluxe"
Black
50 g/ ± 340 m



Item no.: 15062
Bead "deluxe"
Light Brown
50 g/ ± 340 m



Item no.: 15063
Bead "deluxe"
Grey Tone
50 g/ ± 340 m



Item no.: 15064
Bead "deluxe"
Green Tone
50 g/ ± 340 m



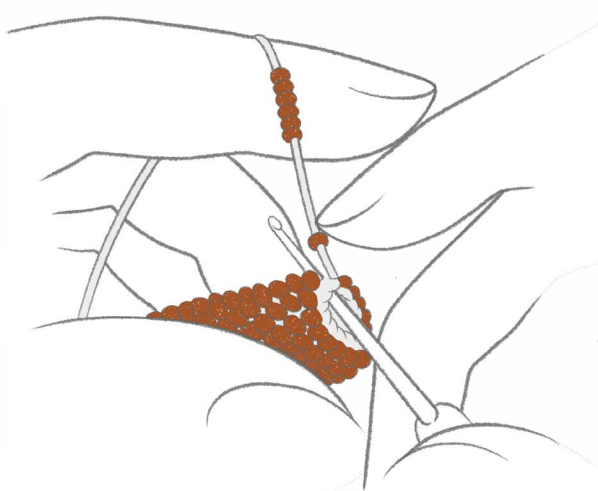
Item no.: 15065
Bead "deluxe"
Terracotta
50 g/ ± 340 m

Pattern

GLASS BEADS HANDLES FOR THE BASKET

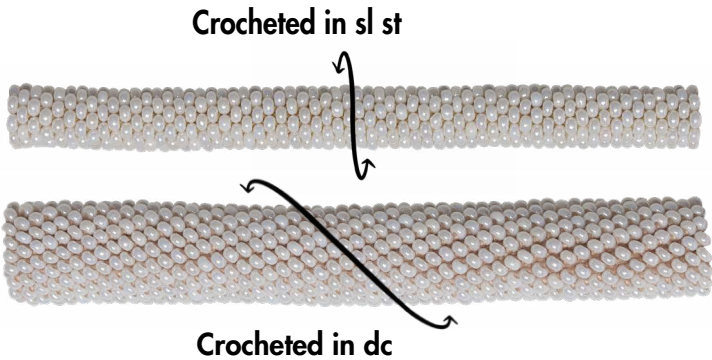
The handle consists of two end pieces which are for mounting on the basket and a middle piece, which is the crocheted bead handle itself. Approximately 700 beads are threaded.

**Pattern can be found on www.gohandmade.net*



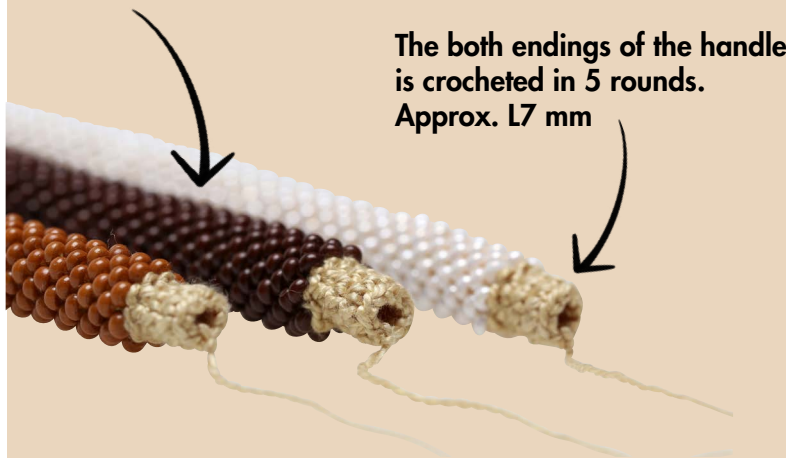
Crochet hook: 1,0 - 1,25 mm

” Handles can be crocheted in dc instead of sl st. It would give a different result.



The handle's part with glass beads
is crocheted in 83 rounds.
Approx. 14 mm

” The pattern for the basket is available separately.
“Moss stitch basket with PU leather bases”



Item no: 96361



5 712006 963610